



How do I setup the Solstice Client for Wireless Display on My PC?

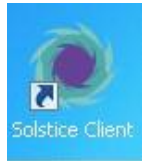
NOTE: Make sure you are connected to AirBears2 

| | |
|----------|--|
| A | If you are installing Solstice while in a Classroom, then enter the Solstice IP Address displayed on the screen into your Internet Browser. This will redirect you to download the Solstice App with the Classroom Directory Service embedded for auto-discovery. (Skip to Step 3 after launching Solstice). |
|----------|--|

| | |
|----------|--|
| B | You may also download & install the Solstice Client by going to “ https://www.mersive.com/download/ ” and selecting the Windows Solstice Client App. |
|----------|--|

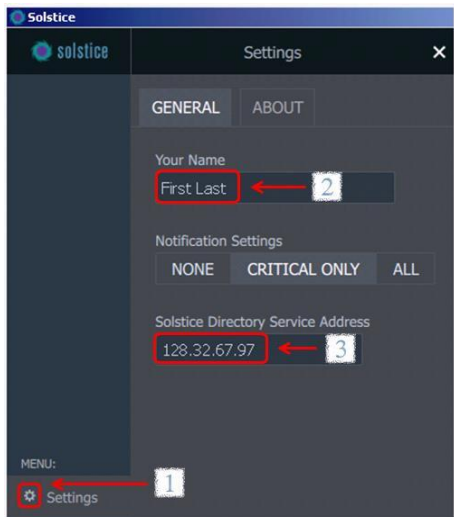
| Step | Procedure |
|------|-----------|
|------|-----------|

| | |
|---|--|
| 1 | Once installed, Double Click the “ Solstice Client ” Desktop Icon |
|---|--|

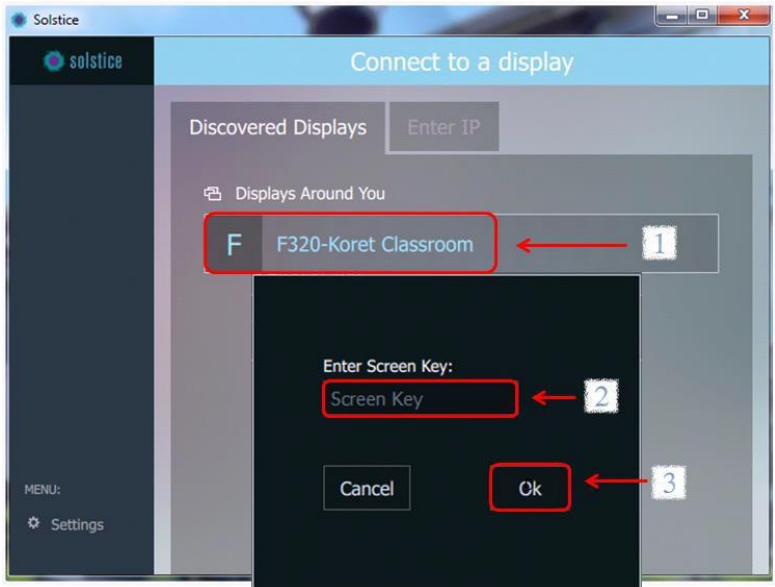


| Step | Procedure |
|------|-----------|
|------|-----------|

| | |
|---|--|
| 2 | <p>1 : Select the gear icon on the upper right</p> <p>2 : Enter your Name</p> <p>3 : Enter 128.32.67.97 (Solstice Directory Service- this will enable Haas Classroom Discovery)</p> <p>Go back to Discovered Displays</p> |
|---|--|



| Step | Procedure |
|------|--|
| 3 | <p>1 : Select the Classroom you would to connect to (wait for the displays to appear)</p> <p>2 : Enter the “Screen Key” provided on the Classroom Display</p> <p>3 : Click “Ok”</p> |



| Step | Procedure |
|------|--|
| 4 | You are now connected and ready to share 😊 |

